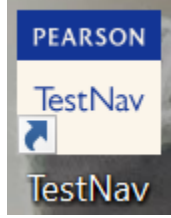

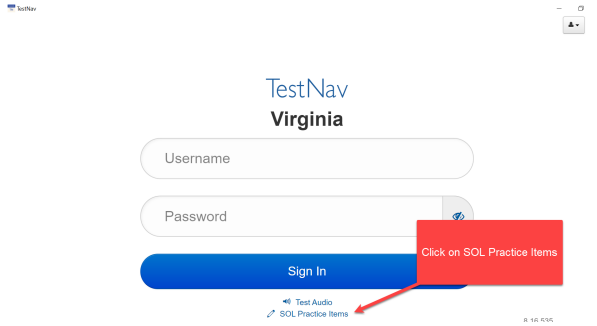
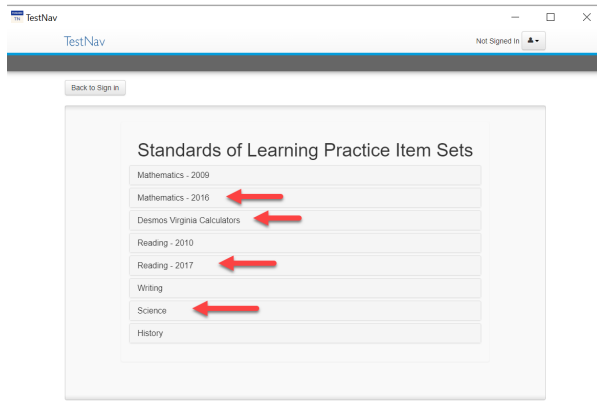
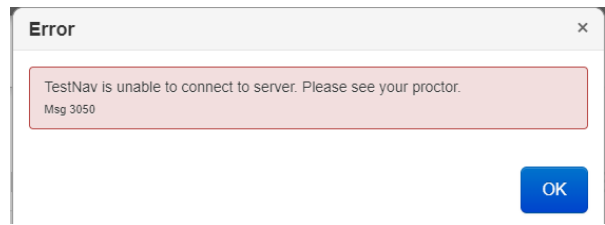


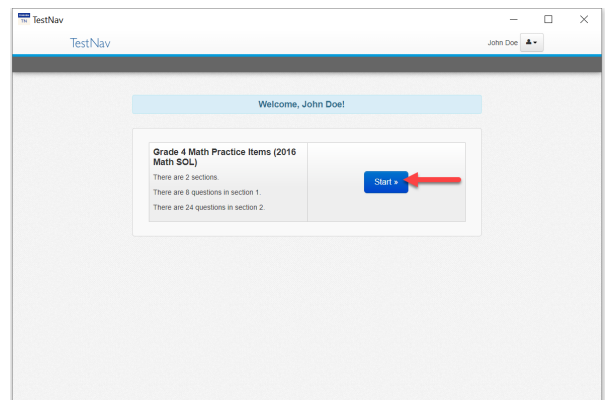
SOL Practice in Test Nav

<p>1. Use the TestNav icon on your desktop to open the TestNav app</p>	
<p>2. If you are asked “Where do you want to go?” select Virginia</p>	
<p>3. Ignore all of the Username/Password boxes and click on “SOL Practice Items” at the bottom of the page. If you don't see it, make sure your window is maximized and scroll down.</p>	
<p>4. Select the test that you want to practice. Choose either:</p> <ul style="list-style-type: none">a. Mathematics- 2016b. Reading 2017c. Desmos Virginia Calculators (for calculator practice)d. Science (if you are in 5th Grade)	

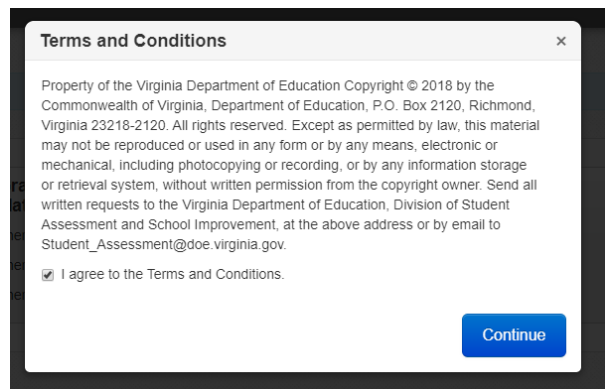
5. If you get an error message click the OK button and try again. You may need to select a different test or close TestNav and re-open it.



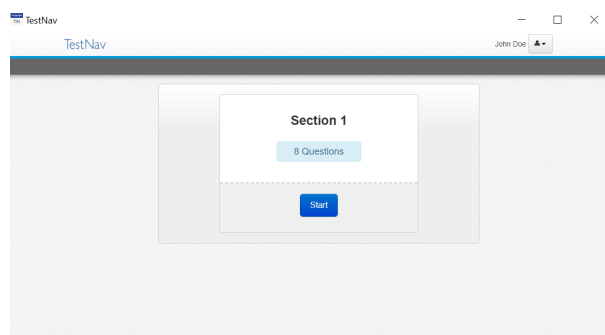
6. At the Welcome screen click the Start button



7. Check the box to agree to the Terms and Conditions and click Continue



8. Click Start to begin the Practice Test



9. These practice tests are designed to practice how to use and navigate the test delivery system and the Technology Enhanced Questions, the focus is NOT the content.
10. Make sure you explore ALL of the options in the Toolbars to get familiar with your options.
11. For Guided Practice Documents (designed to be used in conjunction with the practice items--walks through each question step-by-step) open the appropriate PDF on the [VDOE TestNave SOL Practice Items](#) page.
12. For practice with SOL Released Items (grade level content) see the [VDOE Released Tests and Item Sets](#) webpage.

The screenshot shows a TestNav window with a browser-like interface. The title bar reads "The TestNav" and the address bar shows "GRADE 4 MATH PRACTICE ITEMS (SOL MATH SOL) / SECTION 1 / 1 of 2". The user's name "John Doe" is visible in the top right. The main content area displays a question: "Each of the four models shown is shaded to represent a fraction. Each of the models is the same size." Below the text are four models, each a 3x3 grid of squares. Model 1 has 2 squares shaded (top-left and middle-left). Model 2 has 3 squares shaded (top-left, middle-left, and bottom-left). Model 3 has 4 squares shaded (top-left, middle-left, bottom-left, and top-right). Model 4 has 5 squares shaded (top-left, middle-left, bottom-left, top-right, and middle-right). To the right of the models is a toolbar with icons for erasing, highlighting, and other drawing tools. Below the models is a multiple-choice question: "Which two models appear to have equivalent fractions shaded?" with four options: A. Model 1 and Model 3, B. Model 2 and Model 4, C. Model 1 and Model 2, and D. Model 3 and Model 4. A "No Calculator" icon is visible in the top right corner of the question area.